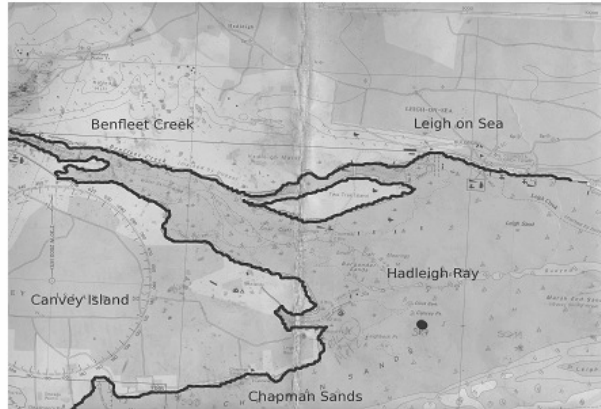


# Obstruction off Canvey Point



As a part of the environmental monitoring for the London Gateway dredging a metal frame has been placed off Canvey Point between Hadleigh Ray and Chapman Sands in order to monitor water quality on the cockle beds during the dredging operations. Its location is:

$51^{\circ} 31' 18.4''\text{N}$ ,  $000^{\circ} 38' 33.7''\text{E}$

Its position is marked with 2 pellet moorings, one due east and one due west of the frame, these are spaced 30m apart. Please pass this information on, any problems with the equipment or markers please get in touch.

[info@gems-group.com](mailto:info@gems-group.com)